



## Air Tightness Testing.

---

The air tightness of new houses and flats has a significant effect on energy efficiency and comfort for occupants. Building Regulations set a maximum level of air permeability that must not be exceeded. Technical Standard L lists ways of proving compliance with this requirement, which includes Air Tightness Testing.

AFM can advise on potential leakage issues before testing and can respond quickly to requests for testing. Pre-completion Air Tightness testing in new dwellings is undertaken to confirm that air leakage into or out of new dwellings does not create excess energy use.

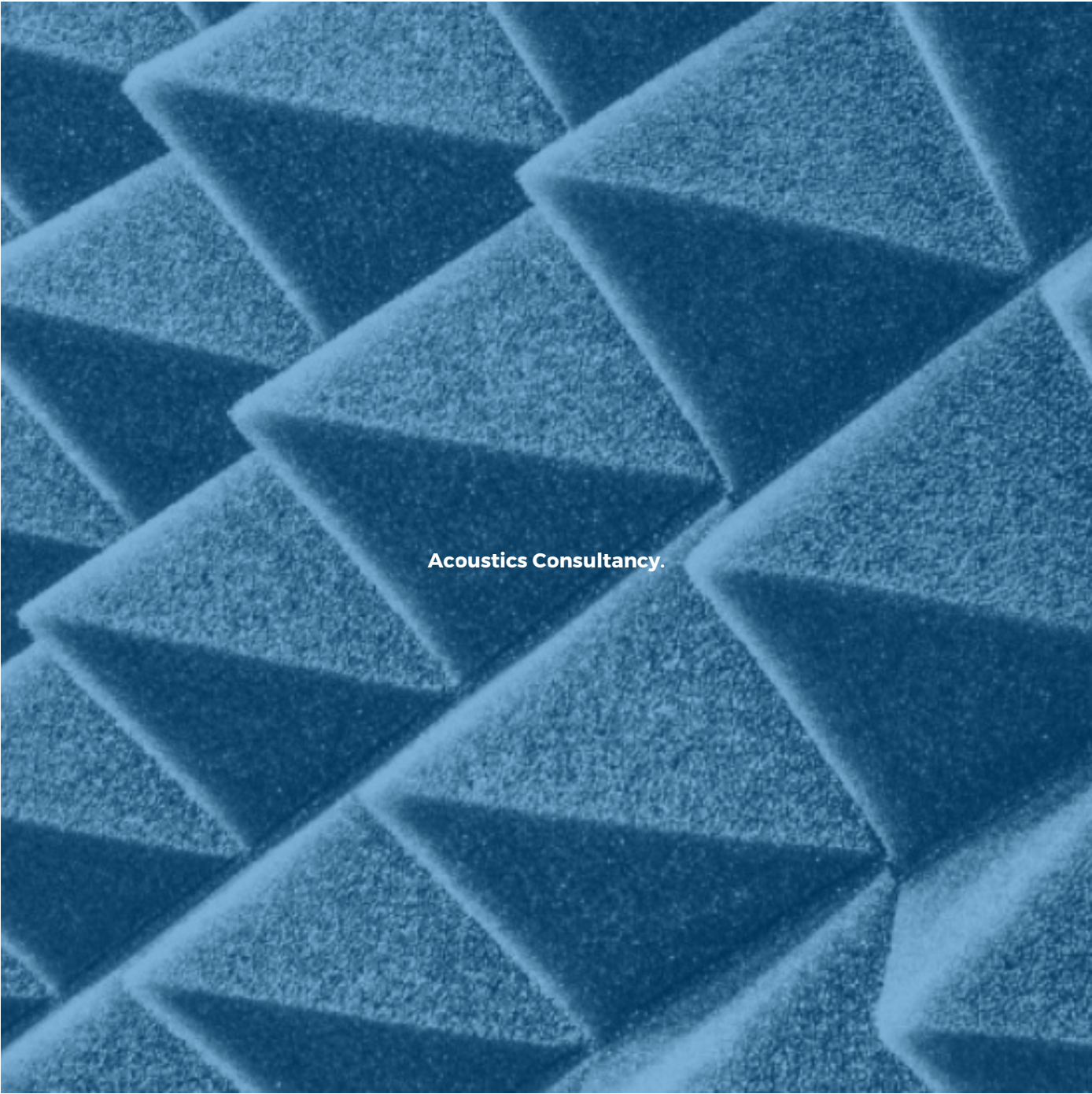
## Certificates.

---



**Related Services.**

---







Building Compliance.



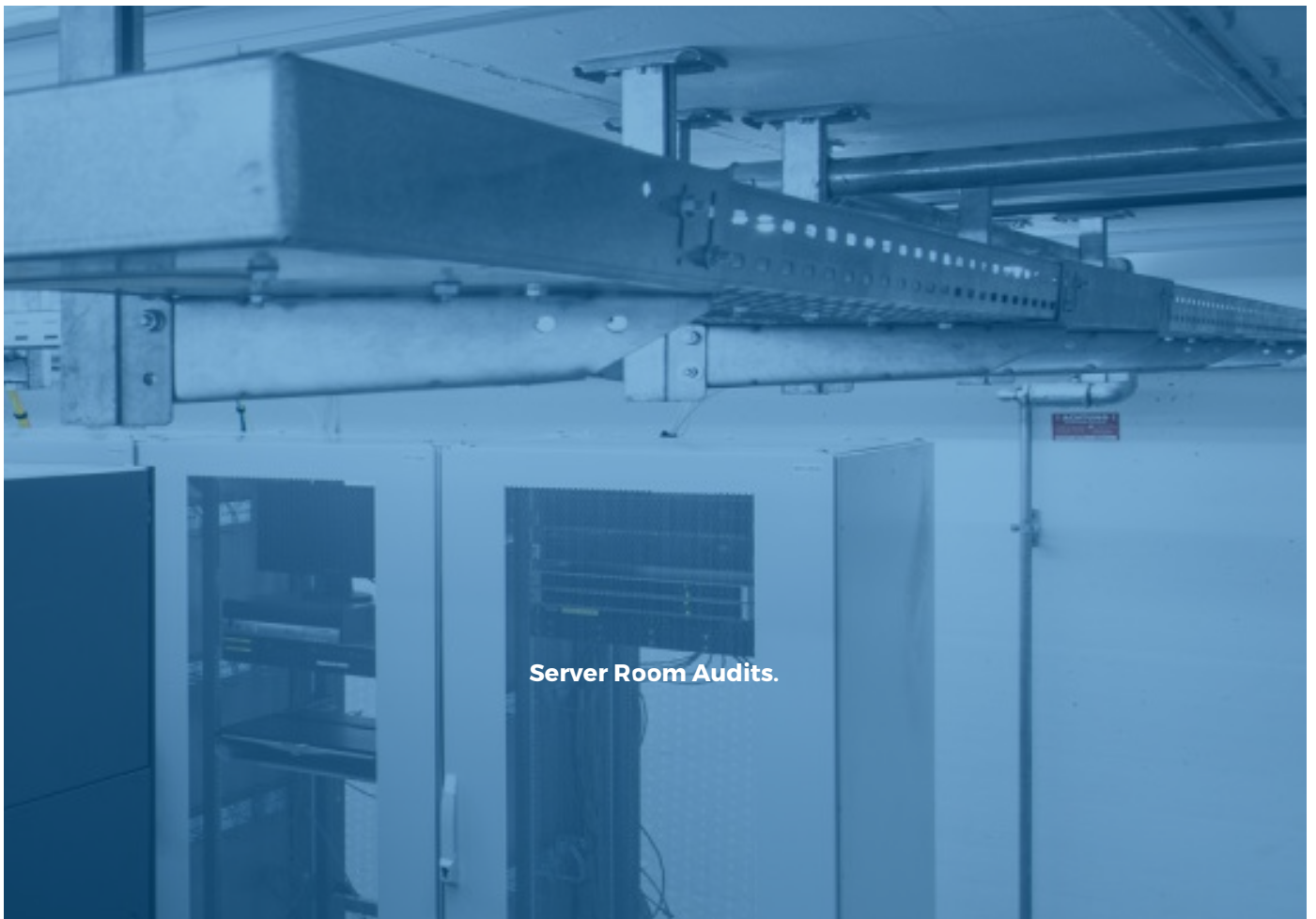
Condition Surveys.







Energy Management.



Server Room Audits.



**Guernsey.**

**Jersey.**

---

Bordeaux House, North Side  
Vale  
Guernsey  
GB  
GY3 5TX

**T:** +44 (0) 1481 252111  
**E:** [enquiries@amalgamatedfm.com](mailto:enquiries@amalgamatedfm.com)  
St. Helier Business Park, La Pouquelaye  
St Helier  
Jersey  
GB  
JE2 3TP

**T:** +44 (0) 1534 877688  
**E:** [enquiries@amalgamatedfm.com](mailto:enquiries@amalgamatedfm.com)